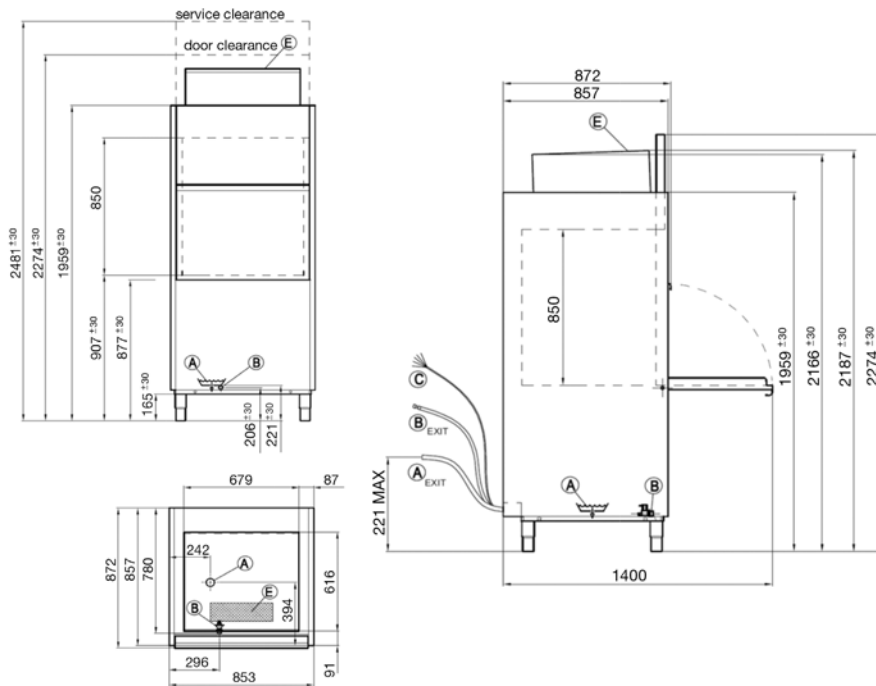


UTENSIL POT WASHERS

MADISON IM85 R With Steam Condenser

code: 25-300R



The IM85 R commercial utensil/potwasher with heat recovery is designed to be ergonomically pleasing yet able to take care of the larger items found inside a kitchen. With a 850mm opening, it is ready to take on anything you are willing to throw at it.

FEATURES

- **Warranty** – 1 year parts and labour, 3 years on the control board & cabinet (see p.28 for conditions & extended warranty offer)
- Energy Saving mode
- Automatic Detergent & Rinse Aid
- Self-Diagnostic system
- 2, 4, 6 & 12 minute wash cycle options
- Low water consumption 4L per rack
- Quick ready function
- Double skinned door

INCLUSIONS

- 1 x Generic steel basket 700mm x 700mm
- 1 x Water connection hose
- 1 x Steam condenser
- 1 x Operating manual

TECHNICAL DATA

Height

Cabinet inc. legs	2187-2217 mm
With hood extended	2274-2304 mm
Service Height	2480-2570 mm
Usable Wash	820 mm

Width

Cabinet	853 mm
---------	--------

Depth

Cabinet	857 mm
With door open	1400 mm

Capacities

Loads/Hour	up to 30*
Water per Cycle	4L
Wash Pump	2700W
Rinse Pump	200W
Wash Tank Litres	68
Rinse Litres	12
Element (wash)	8000W
Element (rinse)	8000W
Detergent Injection	yes
Rinse Aid Injection	yes

Temperatures

Wash Degrees C	60 °C
Rinse Degrees C	82 °C

Plumbing

Drain	Gravity
Water	¾" BSP (cold)

Electrical

Volts/Hz/Phase	400V/50Hz/3+N
Amps	25Amps/Ph

* Subject to incoming water temperature

Water pressure requirements are: 10L/min at 200-400 kPa max.

