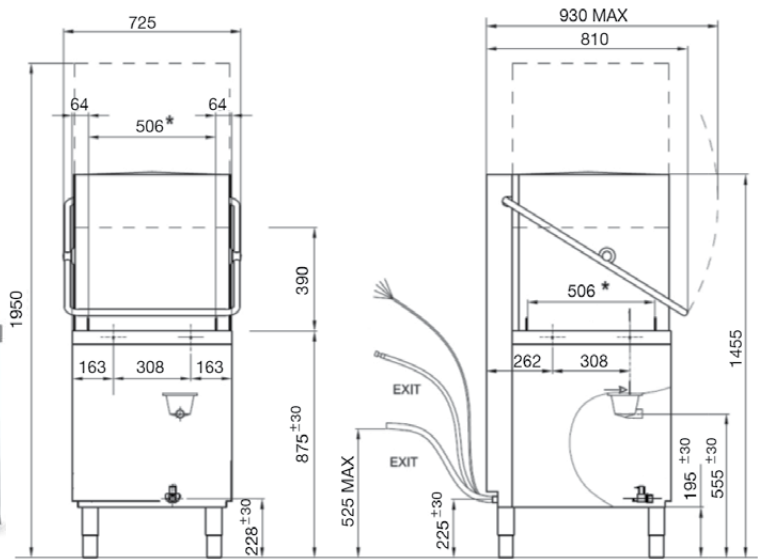


UPRIGHT

IM7



**Benches not included

This 'little brother' of the IM20 is best suited for smaller establishments. European-designed for Australian conditions, this is an extremely user-friendly and functional pass-through machine.

FEATURES

- **Warranty** – 3 years on the control board, 1 year parts and labour on the remainder of the machine
- Up to 700 plates per hour*
- Three wash Cycles 70 / 120 / 180 / 720 seconds
- Automatic detergent & rinse aid injection
- Easy to clean pressed wash chamber
- Self-Diagnostic system
- Ergonomically designed
- Thermostat Function to ensure set rinse temperature is achieved

INCLUSIONS

- 1 x Plate rack 500mm x 500mm
- 1 x Cup rack 500mm x 500mm
- 1 x Cutlery container
- 1 x Drain hose
- 1 x Water connection hose
- 1 x Operating manual

TECHNICAL DATA

Height

Cabinet	1290 mm
Cabinet inc. legs	1455-1515 mm
With hood extended	1890-1950 mm
Usable Wash	390 mm

Width

Cabinet	634 mm
Inc. handle	725 mm

Depth

Cabinet	745 mm
Inc. handle	810 mm

Capacities

Loads/Hour	up to 40*
Water per Cycle	2.7L
Wash Pump	500W
Wash Tank Litres	15
Boiler Litres	6
Element (wash)	2100W
Element (boiler)	8000W
Detergent Injection	yes
Rinse Aid Injection	yes

Temperatures

Wash Degrees C	60 °C
Rinse Degrees C	82 °C

Plumbing

Drain	Gravity (Drain Pump Optional)
Water	¾" BSP (hot)

Electrical

Volts/Hz/Phase	400V/50Hz/3+N
Amps	16Amps/Ph

* Subject to incoming water temperature + pressure

